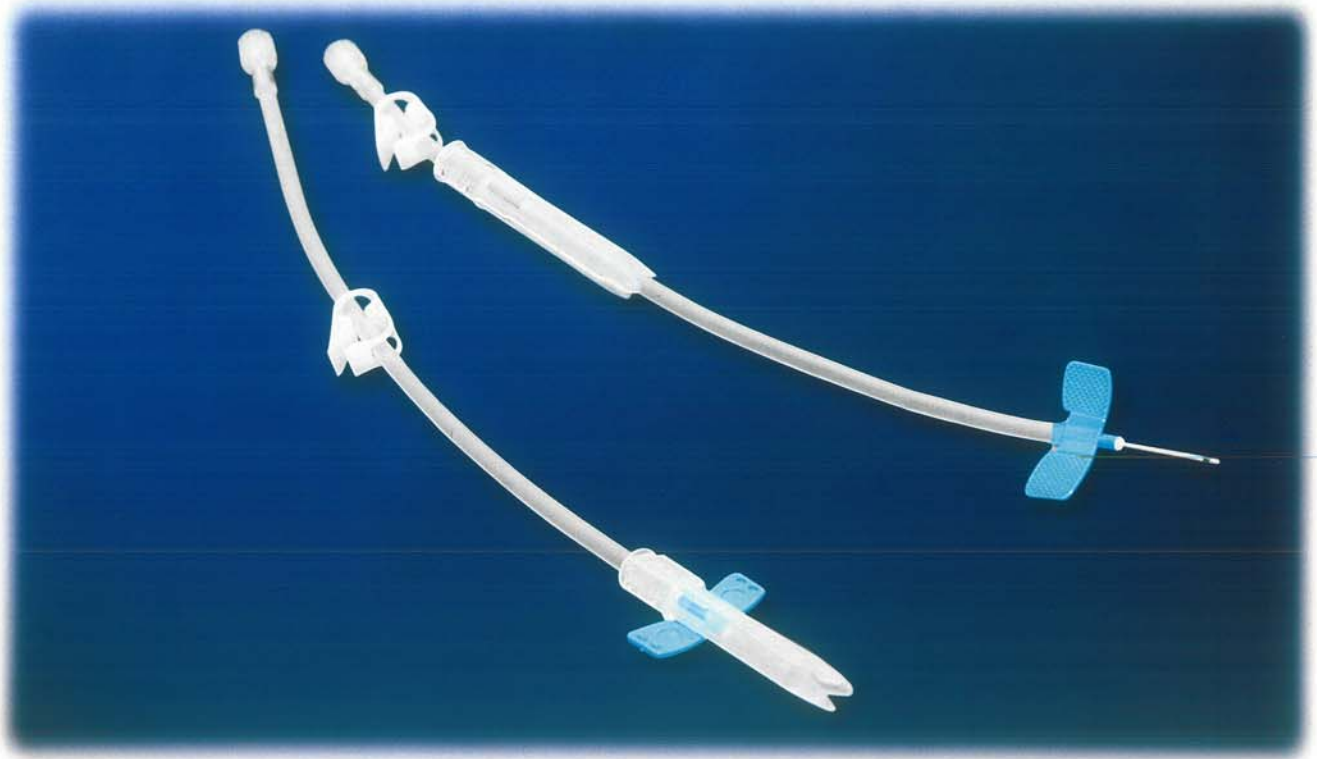




Engineered for safety.

Supported by service.



NIPRO | **SAFETOUCH** **TULIP™** **SAFETY FISTULA NEEDLE**

Features of the clear, patented TULIP safety needle protector:

- Low profile design
- Ease of use during patient cannulation and needle placement
- Activation using a one-handed technique
- Audible click indicating protector is locked and will stay locked
- Meets OSHA safety requirements



Quality you expect. Support you deserve.

- The **NIPRO CONNECTSM PROGRAM** is our commitment to provide every dialysis customer with products of unmatched value through a continuous quality improvement process. In addition, it assures that service, education and the required technical support are provided to each of our business partners.

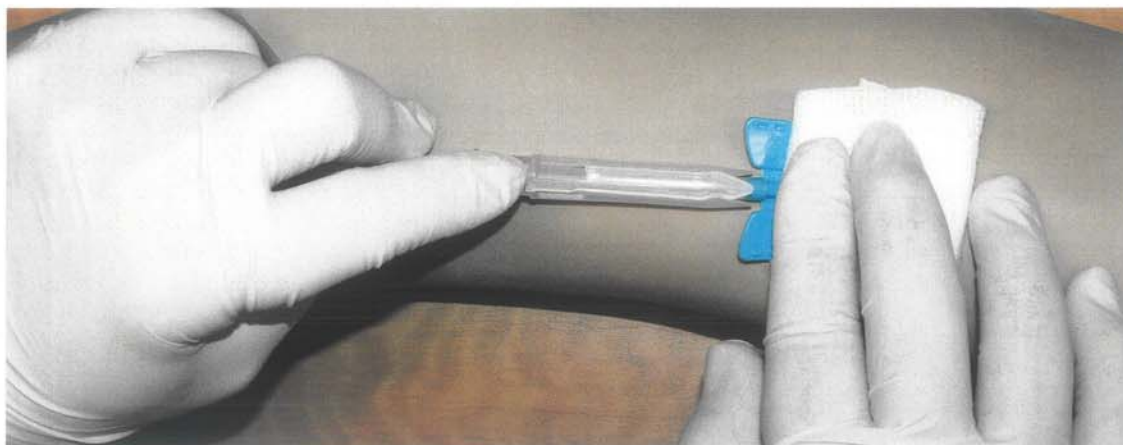


D I A L Y S I S P R O D U C T S

NIPRO | SAFETOUCH TULIP™

SAFETY FISTULA NEEDLE

Below are highlights of the proper removal of the SAFETOUCH TULIP Safety Fistula Needle.

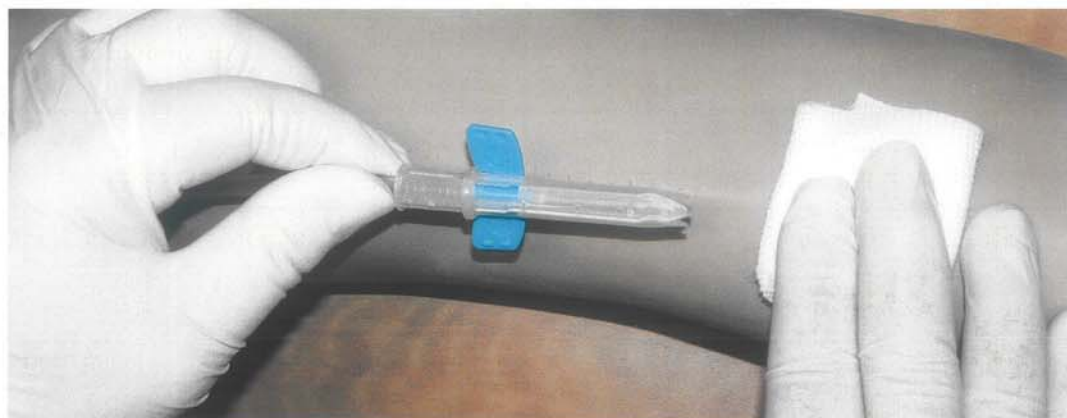


To withdraw the AVF needle from the patient, pull needle back slightly to expose cannulation site.

Slide TULIP needle protector forward until three "petals" of the TULIP needle protector tip are positioned over the flattened wings.

Simultaneously pull on tubing while pushing TULIP needle protector forward completely covering the needle until wings are secured with an audible or tactile "Click".

Dispose of SafeTouch TULIP in an approved biohazard sharps container.



ORDER SPECIFICATIONS

Product Code	Description	Wing Color
FT+142530BC	14G x 1"	Purple
FT+142530BCR	14G x 1"	Purple
FT+152530BC	15G x 1"	Blue
FT+153230BC	15G x 1 1/4"	Blue
FT+152530BCR	15G x 1"	Blue

Product Code	Description	Wing Color
FT+162530BC	16G x 1"	Green
FT+163230BC	16G x 1 1/4"	Green
FT+162530BCR	16G x 1"	Green
FT+172530BC	17G x 1"	Orange
FT+173230BC	17G x 1 1/4"	Orange
FT+172530BCR	17G x 1"	Orange

All of the above Product Codes include 12" tubing, Fixed Wing and Backeye Needle. If preferred, any of these can also be ordered with Rotating Wing, 6" tubing, and/or without Backeye Needle. Also available in twin packs.

Caution: Federal (US) law restricts this device to sale by or on the order of a physician or other licensed practitioner. For safe and proper use of this device refer to the device instructions.



NIPRO

NIPRO MEDICAL CORPORATION

3150 NW 107th Avenue
Miami, FL 33172
Tel: (305) 599-7174
Fax: (305) 599-8454

For additional information on this product and/or the NIPRO CONNECT™ PROGRAM, call us toll-free at 1-888-647-7698/ext. 405. www.nipro.com

© 2007 Nipro Medical Corp. Printed in U.S.A.
TULIP™ is a trademark of Nipro Corporation.
October 2007

US PATENT#
7,175,610
4,941,881